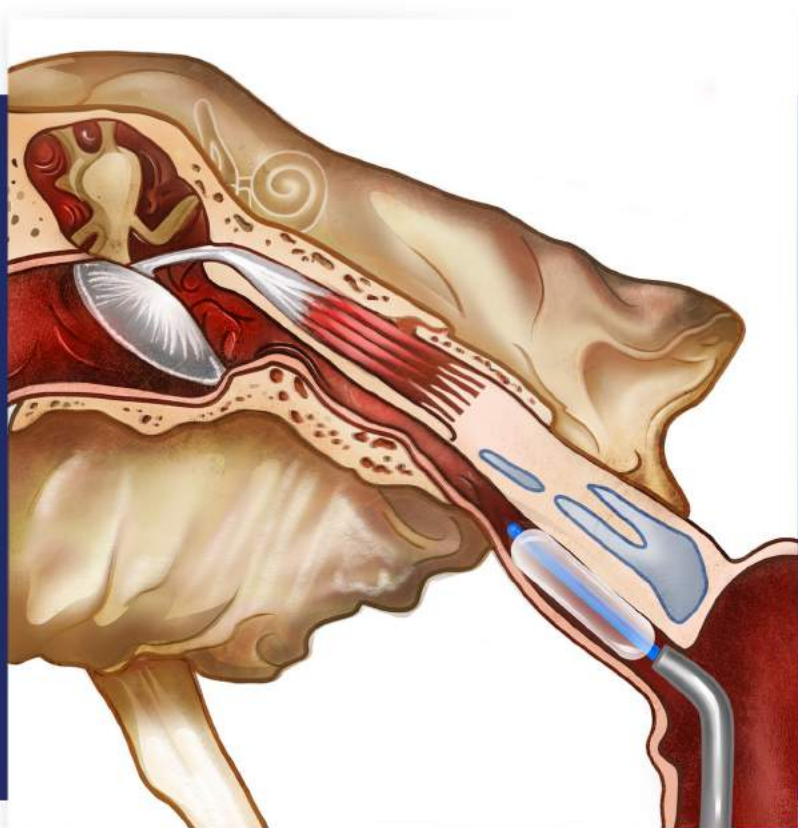


EustaCare

A new, minimally-invasive
intervention for persistent
Eustachian Tube Dysfunction



InnAccel
innovation... accelerated

About Eustachian Tuboplasty



EustaCare is India's first indigenously developed Eustachian Tuboplasty system for the minimally invasive treatment of persistent Eustachian Tube Dysfunction in adults. This treatment approach is backed by significant clinical evidence demonstrating high rates of long-term safety and efficacy of the procedure.

Clinical Studies on Tuboplasty*

Balloon tuboplasty safe, feasible and effective even in the long-term

- Retrospective cohort study by Schroder et. al.
- 622 patients with Eustachian tube dysfunction underwent Eustachian Tuboplasty
- Eustachian Tube Score improved significantly in over 80% of patients even up to 5 years of follow up
- Subjective patient satisfaction was 80%

Prospective multicentre randomised control trial found Balloon tuboplasty to be superior to continual medical management

- Meyer et. al. conducted a trial in 60 ETD patients with 12 months follow
- Compared Balloon Tuboplasty to medical management
- Balloon Tuboplasty is a safe, well tolerated
- The procedure found to be superior to continued medical management for persistent ETD based on improved ETDQ-7 scores,

2018 systematic review concluded that balloon sinuplasty improvements seen in all parameters

- Systematic review by Huisman et. al. A included 15 studies
- Covered a total of 1,155 patients treated with Balloon Tuboplasty
- Improvement seen in symptoms, otoscopy, Valsalva or Toynbee test, audiometry, tympanometry, Eustachian tube dysfunction classification, and Eustachian tube score.

*EustaCare studies in progress.

EustaCare Guide

- Autoclavable, stainless steel guide
- 55° exit angle for appropriate anatomical orientation with the ET
- 6-sided Hex-Grip for complete rotation control

EustaCare Balloon

- Optimal balloon design for adult ETs with 6mm diameter and 24mm dilating length
- Atraumatic tip design
- Actuator for easy, single-handed insertion/retraction with built-in "stop" to control balloon insertion depth
- Endoscopic markers for balloon position confirmation
- Single inflation port



Benefit

Control	<ul style="list-style-type: none">• Hex-Grip and Balloon Actuator enables single-handed use and controlled deployment• Optimal tube flexibility for enhanced tactile feedback• Appropriate balloon exit angle
Safety	<ul style="list-style-type: none">• Atraumatic tip and Actuator stop for enhanced safety• Tapered Balloon design for anatomical conformity• Endoscopic markers for visual position confirmation
Affordability	<ul style="list-style-type: none">• Reusable Guiding system

EustaCare detailed specifications:

EustaCare Balloon

- Total Length: 500mm
- Max Diameter: 6mm
- Balloon Length: 24mm
- Pressure: 10 atm
- Usage: Single patient use

EustaCare Guide Handle

- Material: Stainless steel
- Total Length: ~150mm
- Insertable Length: 105mm
- Exit Angle: 55°
- Grip: 6-sided Hexagon
- Usage: Reusable
- Sterilization: Autoclave

Inflation system

- Reusable
- Sterilization: Low-temperature options only (e.g., EtO, plasma)

For Orders or more information:



+91 – 9972611573

About InnAccel – InnAccel is a Bangalore-based company that has created India's first MedTech innovation platform, anchored by state-of-the-art R&D facilities and a network of national and global partners. Our goal is to build a portfolio of medical products designed, engineered, and priced, for global emerging markets.

For more information, visit www.innaccel.com.